

1700 - 2100 RPM Steering Wheel and/or Accelerator Pedal Vibration

Service Category Engine/Hybrid System

Section Engine Mechanical

Market USA

Lexus Supports
ASE Certification 

Applicability

YEAR(S)	MODEL(S)	ADDITIONAL INFORMATION
2008 – 2009	LX570	

Introduction

Some vehicles may exhibit transmitted engine vibration through the steering wheel and/or accelerator pedal between 1700 – 2100 rpm. Use the following repair procedure to reduce the level of vibration.

Production Change Information

This TSIB applies to vehicles produced **BEFORE** the Production Change Effective VIN shown below.

MODEL	PRODUCTION CHANGE EFFECTIVE VIN
LX 570	JTJHY00W#94029720

Warranty Information

OP CODE	DESCRIPTION	TIME	OFP	T1	T2	NOTE
TC9008	Transfer Case and Damper Assembly	9.0	36100-60B01	9B	57	With Step 2
TC9007	Damper Assembly and Heater Hose	5.0	52380-60130			Without Step 2

APPLICABLE WARRANTY

- This repair is covered under the Lexus Powertrain Warranty. This warranty is in effect for 72 months or 70,000 miles, whichever occurs first, from the vehicle's in-service date.
- Warranty application is limited to correction of a problem based upon a customer's specific complaint.

1700 - 2100 RPM Steering Wheel and/or Accelerator Pedal Vibration

Parts Information

PREVIOUS PART NUMBER	CURRENT PART NUMBER	PART NAME	QTY
36100-60B01	Same	Transfer Case Assembly	1
87124-28460	87124-60260	Clamp, Heater	1
N/A	87127-60030	Packing, Heater	2
87124-60210	87124-60250	Clamp, Heater	1
90179-06314	Same	Nut	1
52380-60090	52380-60130	Front Differential Front Support Assembly, LH	1
41653-60060	41653-60080	Stopper, Differential Mount Upper	1
52380-60070	52380-60140	Front Differential Support Assembly	1
90105-14177	Same	Bolt	3
N/A	41196-60070	Damper, Differential Dynamic	1
N/A	91511-80820	Bolt	2
N/A	55112-60040	Dash Panel, No. 2	1
N/A	90178-06019	Nut, Flange	2

Required Tools & Equipment

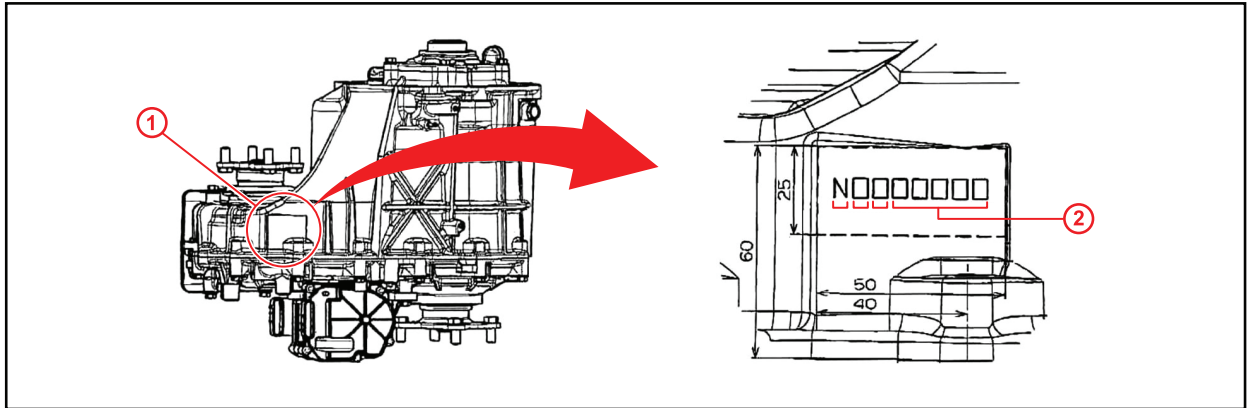
TOOLS & MATERIAL	QUANTITY
3M Scotch-Weld™ DP-460 Adhesive (or Equivalent)	1

1700 - 2100 RPM Steering Wheel and/or Accelerator Pedal Vibration

Repair Procedure

1. Confirm that the transfer case assembly is NOT a countermeasure part.

Figure 1.



1 Identification Location			2 Serial Number	
2ND DIGIT	3RD DIGIT	SERIAL NUMBER	COUNTERMEASURE?	
8	Z	00277 or higher	Yes	
9	All	All	Yes	

- If the identification number is prior to “N8Z00277”, continue to step 2.
 - If the identification number is “N8Z00277” or higher, or begins with “N9”, continue to step 3.
2. Remove and replace the transfer case assembly.

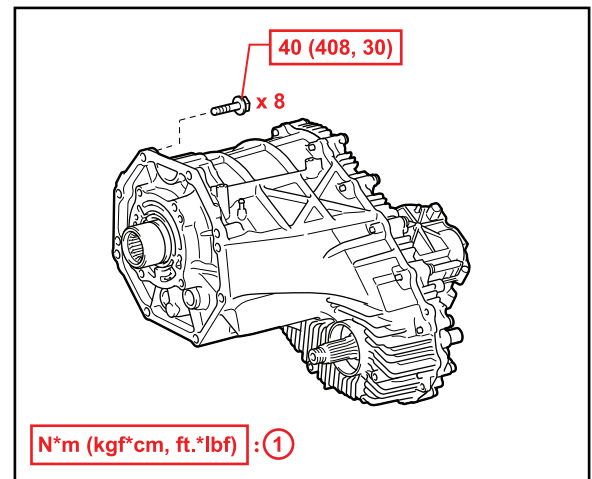
Refer to the Technical Information System (TIS), applicable model year LX 570 Repair Manual:

[2008 / 2009 LX 570, Drivetrain – Transfer/4wd/Awd – “JF2A Transfer / 4WD / AWD: Transfer Assembly: Removal”](#)

[2008 / 2009 LX 570, Drivetrain – Transfer/4wd/Awd – “JF2A Transfer / 4WD / AWD: Transfer Assembly: Installation”](#)

Torque: 40 N*m (408 kgf*cm, 30 ft*lbf)

Figure 2. Transfer Assembly



1 Specified Torque

1700 - 2100 RPM Steering Wheel and/or Accelerator Pedal Vibration

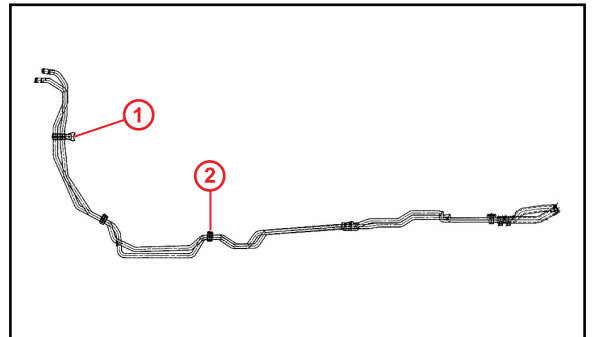
Repair Procedure (Continued)

3. Install the heater pipe clamp cushion.

A. Remove and replace the dash heater clamp with the revised part.

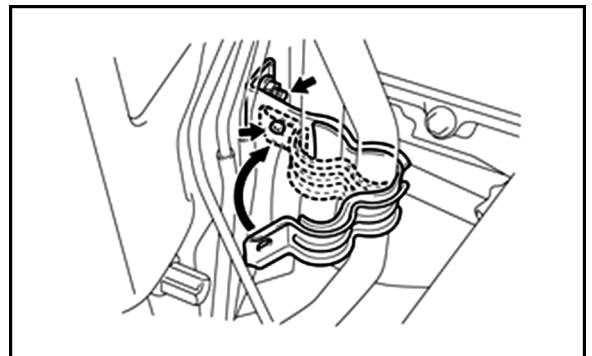
Torque: 9.8 N*m (100 kgf*cm, 87 in*lbf)

Figure 3.



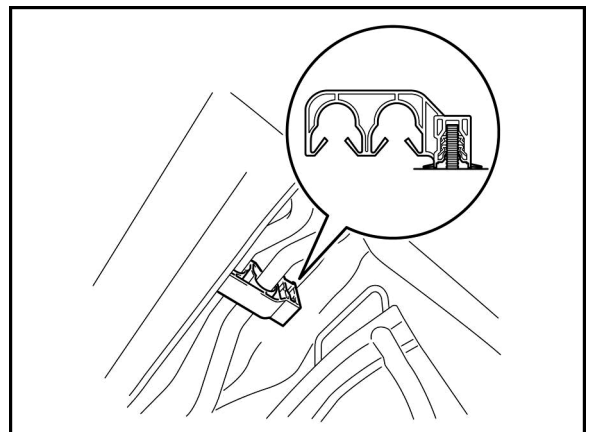
1	Dash Heater Clamp
2	Floor Heater Clamp

Figure 4.



B. Remove the floor heater clamp.

Figure 5.

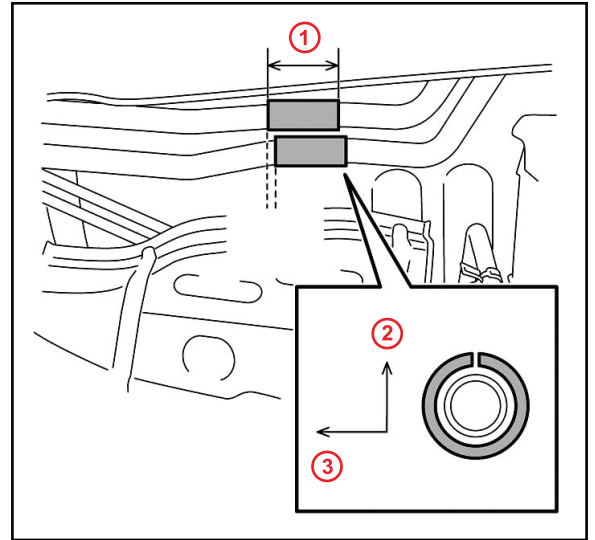


1700 - 2100 RPM Steering Wheel and/or Accelerator Pedal Vibration

Repair Procedure (Continued)

- C. Adhere the sponge tape (heater packing, P/N 87127-60030) to the heater pipe as shown, and install the revised floor heater clamp.

Figure 6.



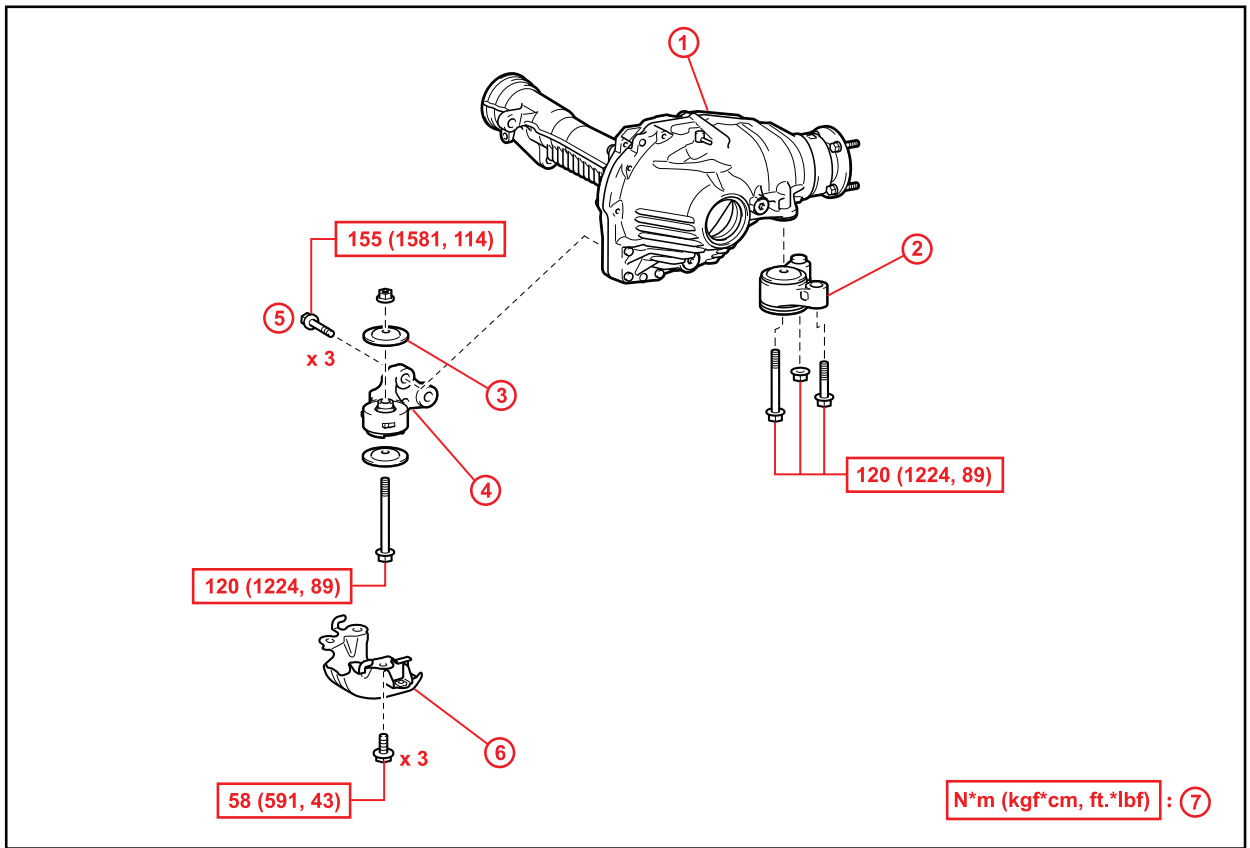
1	60 mm (2.36 in.)
2	Top
3	RH

1700 - 2100 RPM Steering Wheel and/or Accelerator Pedal Vibration

Repair Procedure (Continued)

4. Install the front differential carrier assembly supports.
 - A. Support the front differential carrier assembly using a transmission support or equivalent.
 - B. Remove and replace the Front Differential Front Support Assembly LH, the 3 mounting bolts (P/N 90105-14177), and Upper Differential Mount Stopper with revised parts.
 - C. Remove and replace the Front Differential Support Assembly with the revised part.

Figure 7.



1	Front Differential Carrier Assembly
2	Front Differential Support Assembly (P/N 52380-60140)
3	Upper Differential Mount Stopper (P/N 41653-60080)
4	Front Differential Front Support Assembly LH (P/N 52380-60130)
5	Mounting Bolt (P/N 90105-14177)
6	Front Suspension Rebound Stopper Sub-assembly LH
7	Specified Torque

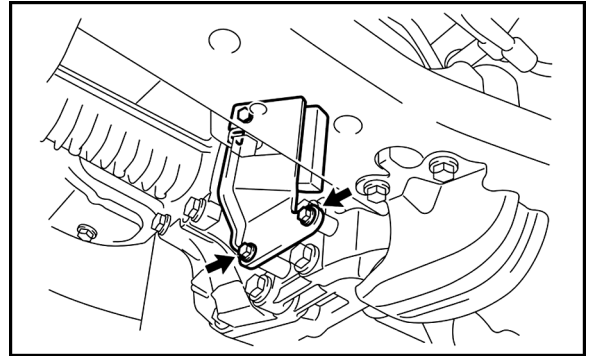
1700 - 2100 RPM Steering Wheel and/or Accelerator Pedal Vibration

Repair Procedure (Continued)

- D. Install the dynamic damper with the two bolts to the Front Differential Front Support Assembly LH.

Torque: 25 N*m (255 kgf*cm, 18 ft*lbf)

Figure 8.



- E. Drive vehicle using the following driving pattern:

- Drive the vehicle at highway speeds for 40 minutes to warm up the front differential gear oil to operating temperature.
- Place the shifter in the S1 position and quickly accelerate to 25 mph (40 km/h) and then coast down to 12 mph (19 km/h). Repeat the acceleration/coast pattern another 14 times.

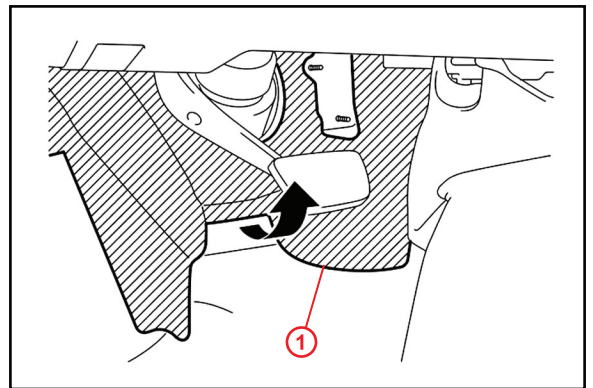
- F. Inspect the front differential housing in the Front Differential Front Support Assembly LH mounting area for any leaks. If any leaks are detected, reseal the front differential following the instructions in the Repair Manual.

5. Install dash panel No. 2.

- A. Remove the accelerator pedal.

- B. Lift the dash silencer pad to gain access to the dash panel area.

Figure 9.



1	Silencer Pad
----------	---------------------

1700 - 2100 RPM Steering Wheel and/or Accelerator Pedal Vibration

Repair Procedure (Continued)

NOTE

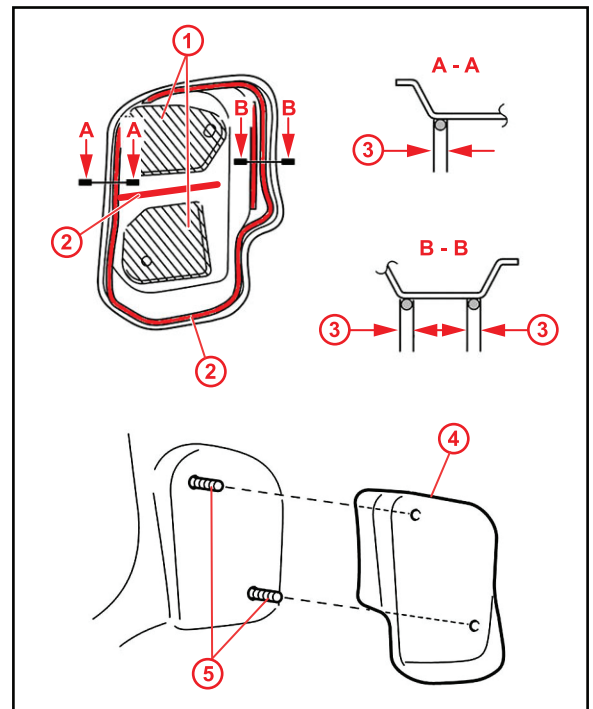
- Steps C through E should be completed within 30 minutes.
- Refer to the instructions for 3M Scotch-Weld™ DP-460 Adhesive (or equivalent).

C. Apply 3M Scotch-Weld™ DP-460 Adhesive (or equivalent) in a continuous line as shown in the illustration, including the flat surface between the contact surfaces.

NOTE

- Do NOT apply the adhesive to the contact surface areas of dash panel No. 2.
- Be careful NOT to get adhesive on the studs.
- Wipe off any adhesive immediately as it can cause improper torque.

Figure 10.



1	Contact Surface
2	Adhesive
3	3 mm (0.12 in.) Diameter
4	Dash Panel No. 2
5	Stud

D. Install dash panel No. 2.

1700 - 2100 RPM Steering Wheel and/or Accelerator Pedal Vibration

Repair Procedure (Continued)

E. Install the accelerator pedal using NEW nuts.

Torque: 7.0 N*m (71 kgf*cm, 5.2 ft*lbf)

NOTE

- Allow the adhesive to cure for 24 hours at 77°F (25°C) after application.
- Be careful NOT to get adhesive on any other parts.
- Do NOT touch the accelerator pedal until adhesive is completely cured (at least 24 hours).
- Refer to the instructions for 3M Scotch-Weld™ DP-460 Adhesive (or equivalent).

F. Re-inspect the front differential housing in the Front Differential Front Support Assembly LH mounting area for any leaks. If any leaks are detected, reseal the front differential following the instructions in the Repair Manual.

6. Test drive the vehicle to verify the condition has been improved.